



Exhibit "A"

All that certain real property situated in the Town of Novato, County of Marin, State of California, being a portion of Lot 2, of Parcel Map 12 at Page 41.

The legal description herein is based upon a survey made by me or under my direction in May of 2019. The bearings contained herein are based upon the monumented line of Harbor Drive "North 44°35'00" East, 579.51 feet", as shown upon the map filed for record in Parcel Map 12 at page 41, Marin County records:

**Beginning** at the Southeast Corner of Lot 1, Phase 1, Black Point Golf Links (Book 2000 of Maps at page 79) and in the Northerly line of Lot 2 (Parcel Map 12 at Page 41); Thence running through the aforementioned Lot 2 the following fifteen courses: South 06°48'25" West a distance of 26.03 Feet; Thence South 73°52'27" East a distance of 97.92 Feet; Thence South 56°58'52" East a distance of 66.49 Feet; Thence South 83°44'19" East a distance of 231.86 Feet; Thence North 71°51'10" East a distance of 678.19 Feet; Thence South 15°15'50" East a distance of 508.14 Feet; Thence South 76°56'37" West a distance of 860.09 Feet; Thence North 22°53'32" West a distance of 514.64 Feet; Thence North 53°01'12" West a distance of 86.53 Feet; Thence North 75°32'20" West a distance of 30.90 Feet; Thence North 83°19'22" West a distance of 23.46 Feet; Thence South 58°31'26" West a distance of 7.62 Feet; Thence South 04°53'18" West a distance of 3.82 Feet; Thence North 80°19'29" West a distance of 31.98 Feet; Thence North 09°40'31" East a distance of 58.11 Feet, to a point in the line of the aforementioned Lot 1 and Lot 2; Thence along the line of Lot 1 and lot 2 South 83°50'40" East a distance of 33.74 Feet; which is the **point of beginning**, having an area of **10.000 Acres**.

See "Exhibit B" Plat Map attached hereto and made a part hereof.

  
Shane W. Rauch

L.S. 9471

05/20/19  
Date



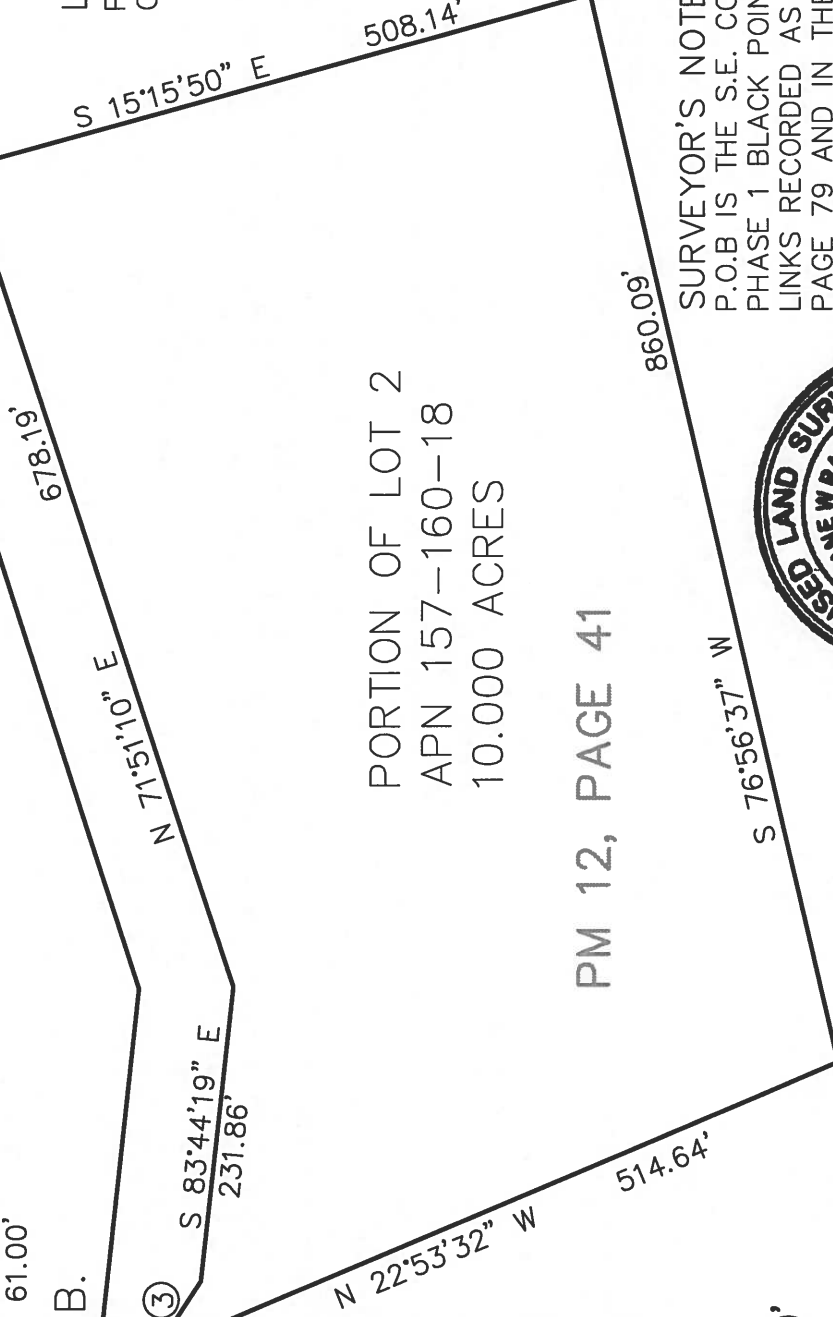
LOT 1, PHASE 1  
 BOOK 2000 OF  
 MAPS, PAGE 79

PORTION OF LOT 1  
 PM 12, PAGE 41

"EXHIBIT B"  
 LEASE AREA

N 83° 50' 40" W 1091.29'(T) 713.06'  
 N 90°00'00" W 61.00'  
 P.O.B.

LEGEND  
 P.O.B. = POINT  
 OF BEGINNING

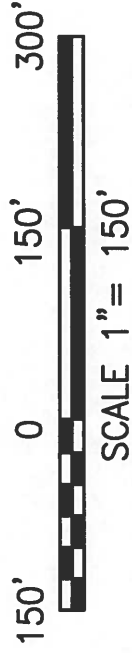


PORTION OF LOT 2  
 APN 157-160-18  
 10.000 ACRES

PM 12, PAGE 41

LINE TABLE

LINE	BEARING	DISTANCE
1	S 06°48'25" W	26.03'
2	S 73°52'27" E	97.92'
3	S 56°58'52" E	66.49'
4	N 53°01'12" W	86.53'
5	N 75°32'20" W	30.90'
6	N 83°19'22" W	23.46'
7	S 58°31'26" W	7.62'
8	S 04°53'18" W	3.82'
9	N 80°19'29" W	31.98'
10	N 09°40'31" E	58.11'
11	S 83°50'40" E	33.74'



OBBERKAMPER & ASSOCIATES  
 CIVIL ENGINEERS INC.

7200 REDWOOD BLVD SUITE 308 NOVATO, CA 94945  
 PHONE: (415) 897-2800 05/20/19 WWW.OBERKAMPER.COM



SURVEYOR'S NOTE:

P.O.B IS THE S.E. CORNER OF LOT 1,  
 PHASE 1 BLACK POINT GOLF COURSE  
 LINKS RECORDED AS 2000 OF MAPS AT  
 PAGE 79 AND IN THE NORTHERLY LINE OF  
 LOT 2 OF PARCEL MAP 12 AT PAGE 41.

BASIS OF BEARING:

MONUMENTED LINE OF HARBOR DRIVE,  
 "N 44°35'00" E 579.51'," AS SHOWN  
 UPON THE MAP FILED FOR RECORD IN  
 PM 12, PG 41.