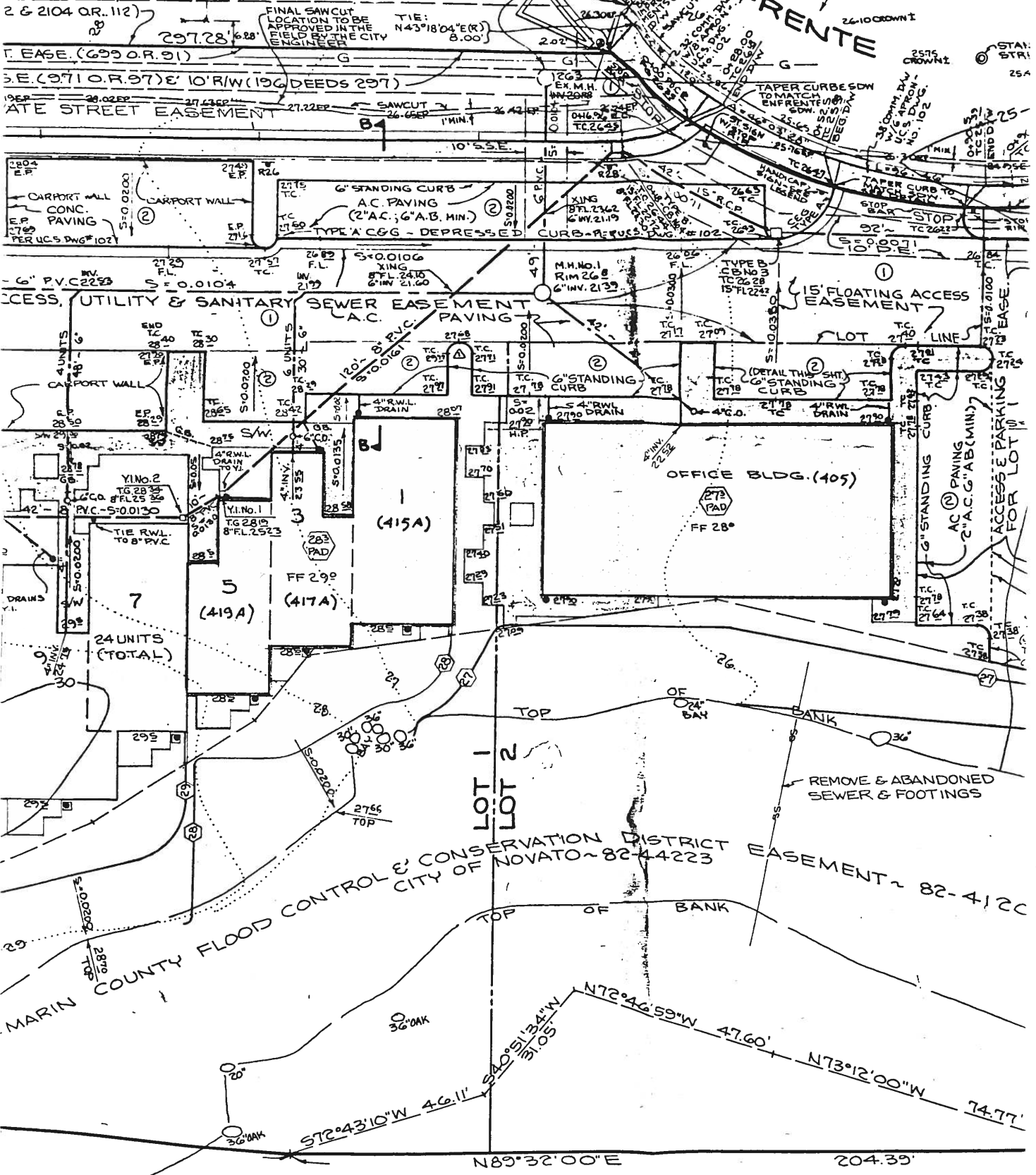


ADJUST TO GRADE
AS REQUIRED PER
N.S.D. SPECS.



IT IS CERTIFIED THAT THE FINISHED FLOORS FOR
THE OFFICE BUILDING AND DWELLING UNITS 1, 3 & 5
WERE CONSTRUCTED TO THE ELEVATIONS SHOWN
HEREON.

Arthur T. Coleman
ARTHUR T. COLEMAN RCE 16429
EXP 6-30-89



Richard Cooper
MARIN COUNTY
Richard Cooper
COOPER ENG