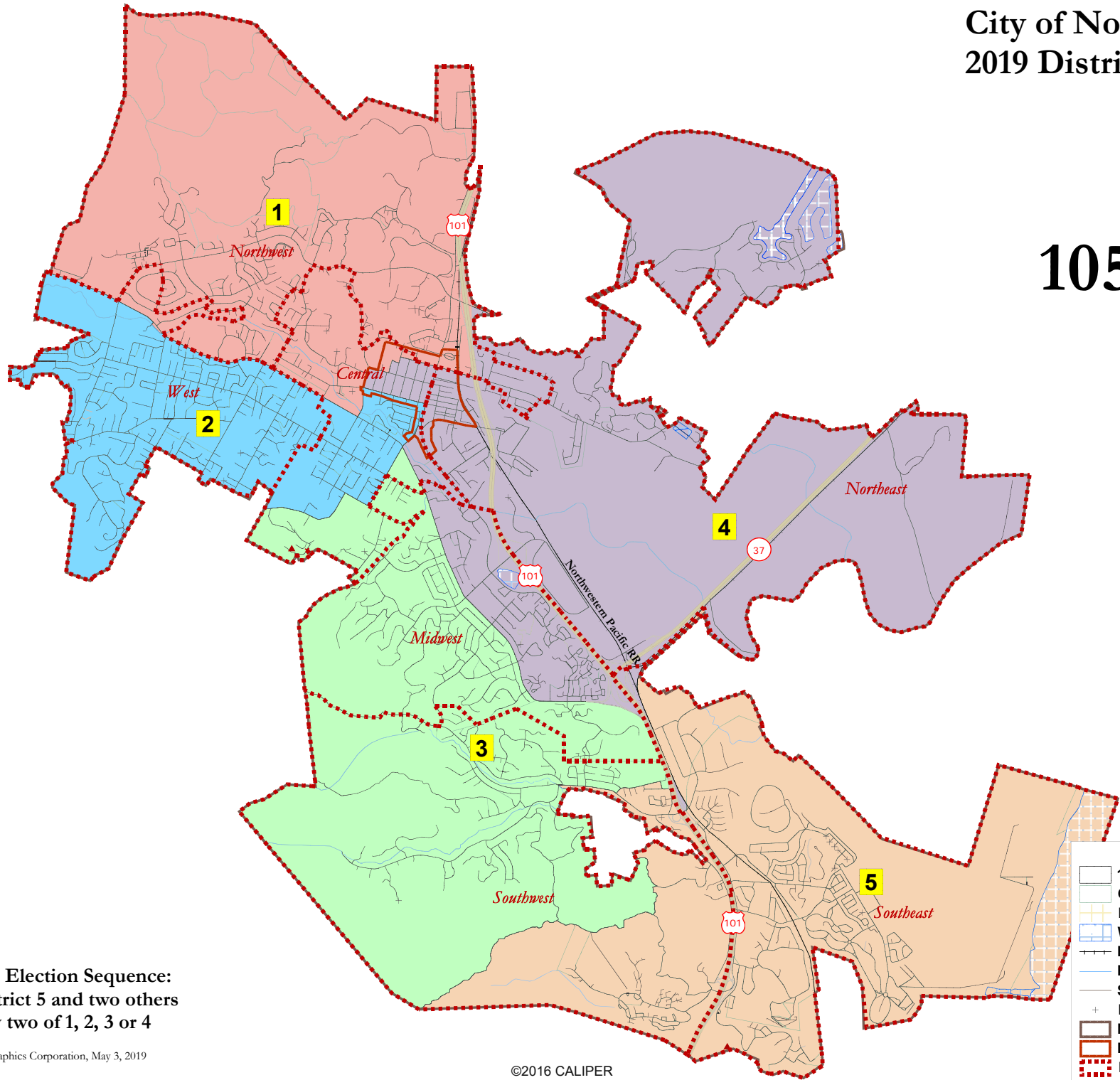


City of Novato 2019 Districting

105



Proposed Election Sequence:
2019: District 5 and two others
2022: Any two of 1, 2, 3 or 4

National Demographics Corporation, May 3, 2019

Map layers

- 105
- Census Block
- Landmark Area
- Water Area
- Railroad
- River
- Streets
- Landmark Point
- Novato
- Downtown
- IdentityReportArea

City of Novato - Map 105

District		1	2	3	4	5	Total
<u>Ideal</u>	Total Pop	10,117	10,641	10,282	10,560	10,304	51,904
10,381	Deviation from ideal	-264	260	-99	179	-77	524
	% Deviation	-2.54%	2.50%	-0.95%	1.72%	-0.74%	5.05%
Total Pop	% Hisp	18%	17%	14%	28%	30%	21%
	% NH White	70%	73%	74%	58%	55%	66%
	% NH Black	2%	3%	2%	4%	5%	3%
	% Asian-American	9%	6%	8%	9%	8%	8%
Citizen Voting Age Pop	Total	7,776	8,499	8,128	7,096	6,172	37,671
	% Hisp	12%	6%	9%	11%	15%	11%
	% NH White	78%	83%	79%	73%	67%	77%
	% NH Black	1%	2%	2%	4%	5%	3%
	% Asian/Pac.Isl.	7%	7%	9%	9%	10%	8%
Voter Registration (Nov 2016)	Total	6,665	6,694	6,771	5,892	5,309	31,331
	% Spanish-Surnamed	7%	8%	8%	10%	10%	9%
	% Asian-Surnamed	3%	3%	4%	4%	4%	4%
	% Filipino-Surnamed	1%	1%	1%	1%	1%	1%
	% NH White est.	84%	85%	83%	79%	74%	81%
	% NH Black	1%	2%	2%	4%	6%	3%
Voter Turnout (Nov 2016)	Total	5,855	5,894	5,908	5,072	4,577	27,306
	% Spanish-Surnamed	7%	8%	8%	9%	10%	8%
	% Asian-Surnamed	3%	3%	4%	3%	4%	3%
	% Filipino-Surnamed	1%	1%	1%	1%	1%	1%
	% NH White est.	84%	86%	84%	80%	75%	82%
	% NH Black	1%	2%	2%	4%	6%	3%
Voter Turnout (Nov 2014)	Total	3,598	3,671	3,592	2,868	2,656	16,384
	% Spanish-Surnamed	6%	5%	5%	6%	6%	5%
	% Asian-Surnamed	3%	2%	3%	3%	4%	3%
	% Filipino-Surnamed	1%	1%	1%	1%	1%	1%
	% NH White est.	86%	91%	90%	86%	85%	88%
	% NH Black est.	1%	1%	1%	3%	3%	2%

Total population data from the 2010 Decennial Census. Citizen Voting Age Pop. data from the 2012-2016 American Community Survey and Special Tabulation 5-year data.